

Antenna, Whip

ERF4036

Description

The ERF4036 antenna is a black 868 MHz antenna with a U.FL connector. The antenna can also be used in these frequency bands: 900 ~ 1030 MHz / 2345 ~ 2470 MHz . The antenna can be used for applications such as, M2M, GSM, Bluetooth, WiFi and Zigbee.

Technology

- LTE-M / CAT-M
- WiFi
- Lora
- GSM
- Bluetooth
- Zigbee
- ISM
- 4G



Antenna, Whip

ERF4036

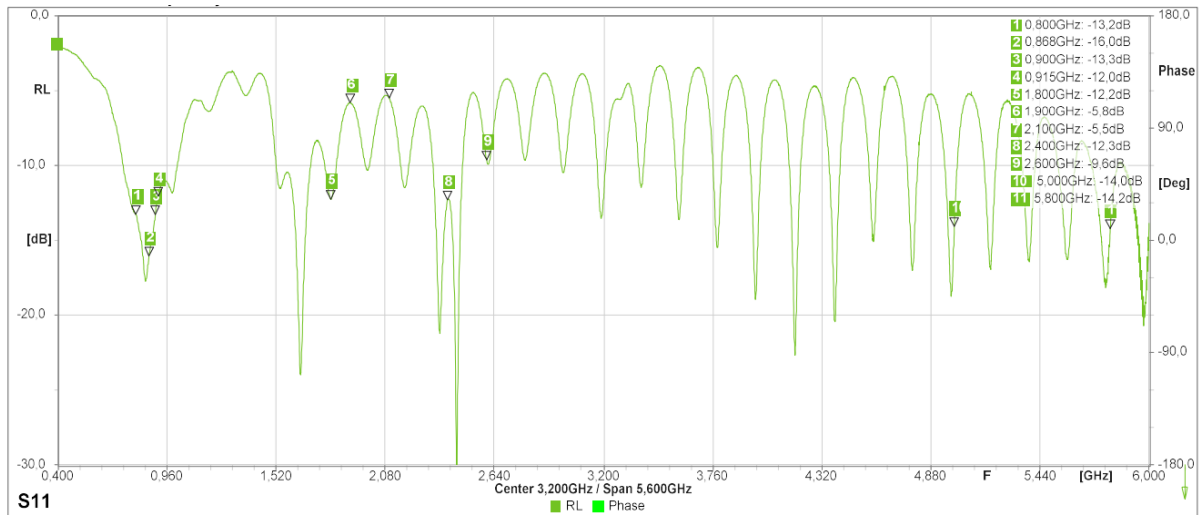
Features

Electrical Properties	Description		
Frequency marker	Frequency band MHz	Return loss dB	V.S.W.R.
1	800	-13,2	< 1.6
2	868	-16.0	< 1.4
3	900	-13,3	< 1.6
4	915	-12.0	< 1.7
5	1.800	-12,2	< 1.7
6	1.900	-5.8	<3.1
7	2.100	-5.5	< 3.2
8	2.400	-12.3	< 1.6
9	2.600	-9,6	< 2.0
10	5.000	-14.0	< 1.5
11	5.800	-14.2	< 1.5
Nominal Impedance:	50 Ω		
Polarization:	Vertical		

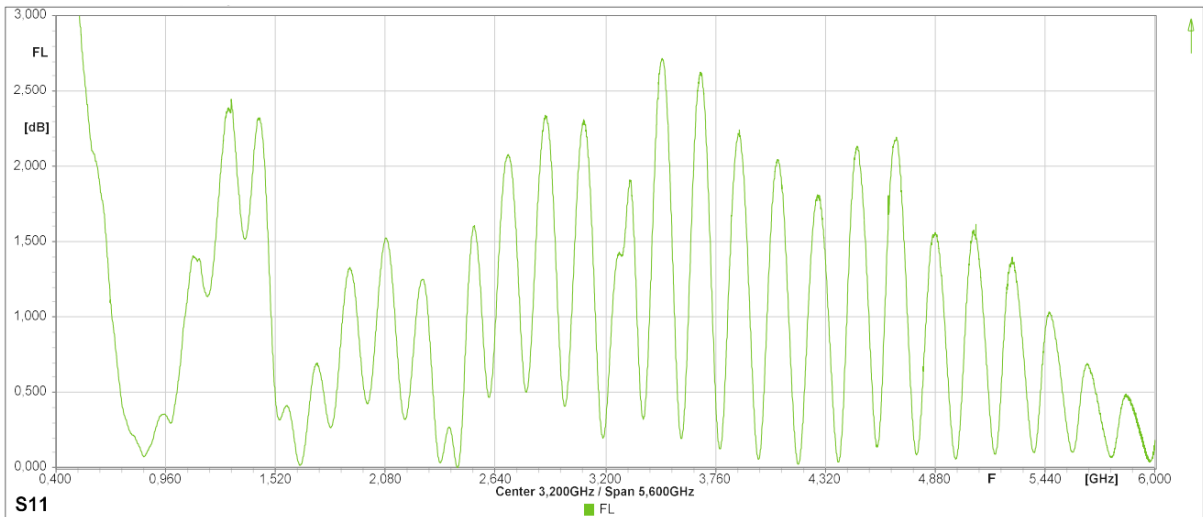
Mechanical Properties	Description
Antenna	External Antenna
Mounting	Magnetic cone
Connector	U.FL
Dimensions	89 mm ± 5
Cable length	500 mm ± 20
Antenna Color	Black
Operating Temperature	-30°C~+70°C
Storage Temperature	-30°C~+70°C

Antenna Properties

Return Loss



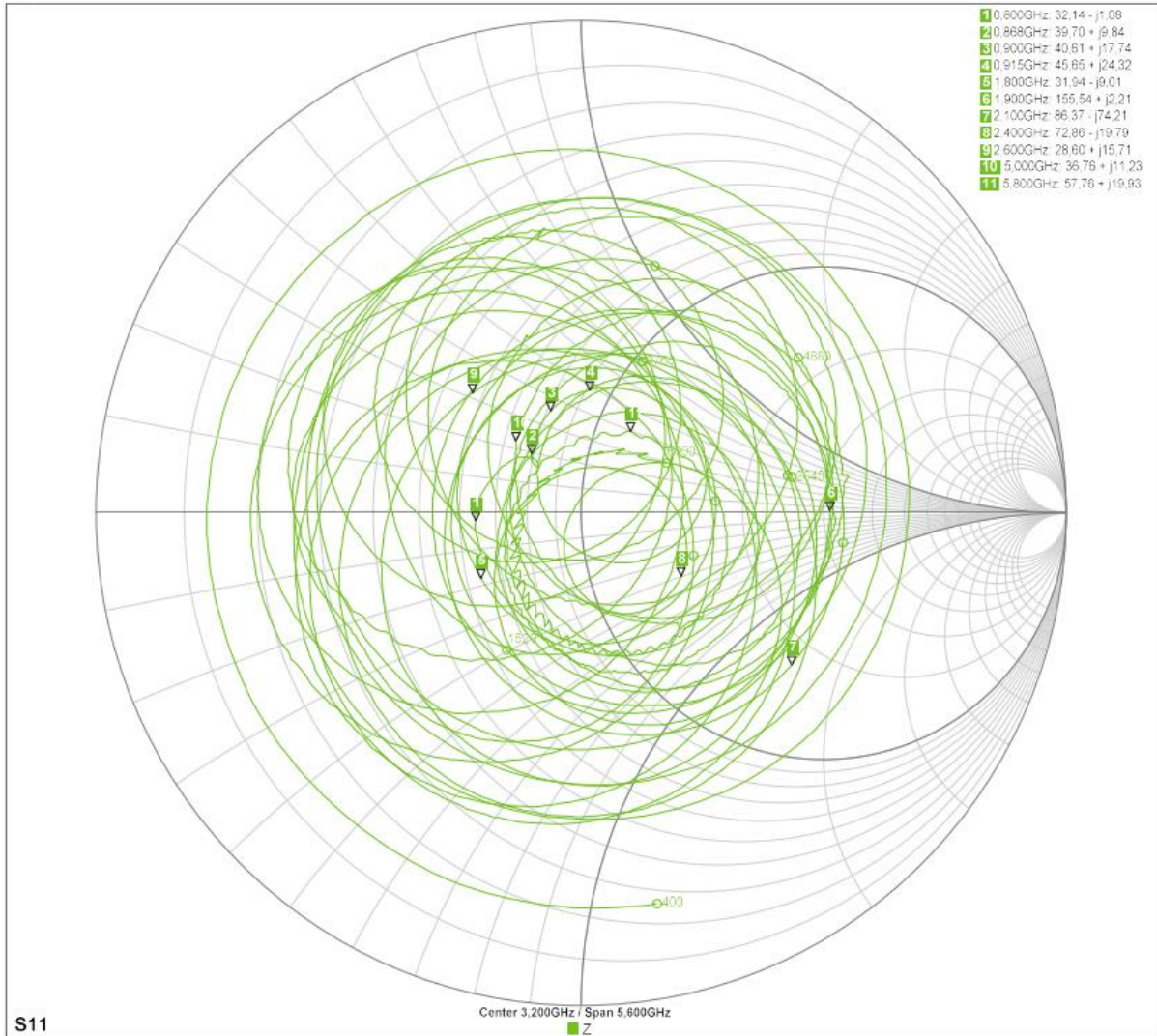
Forward Loss



Antenna, Whip

ERF4036

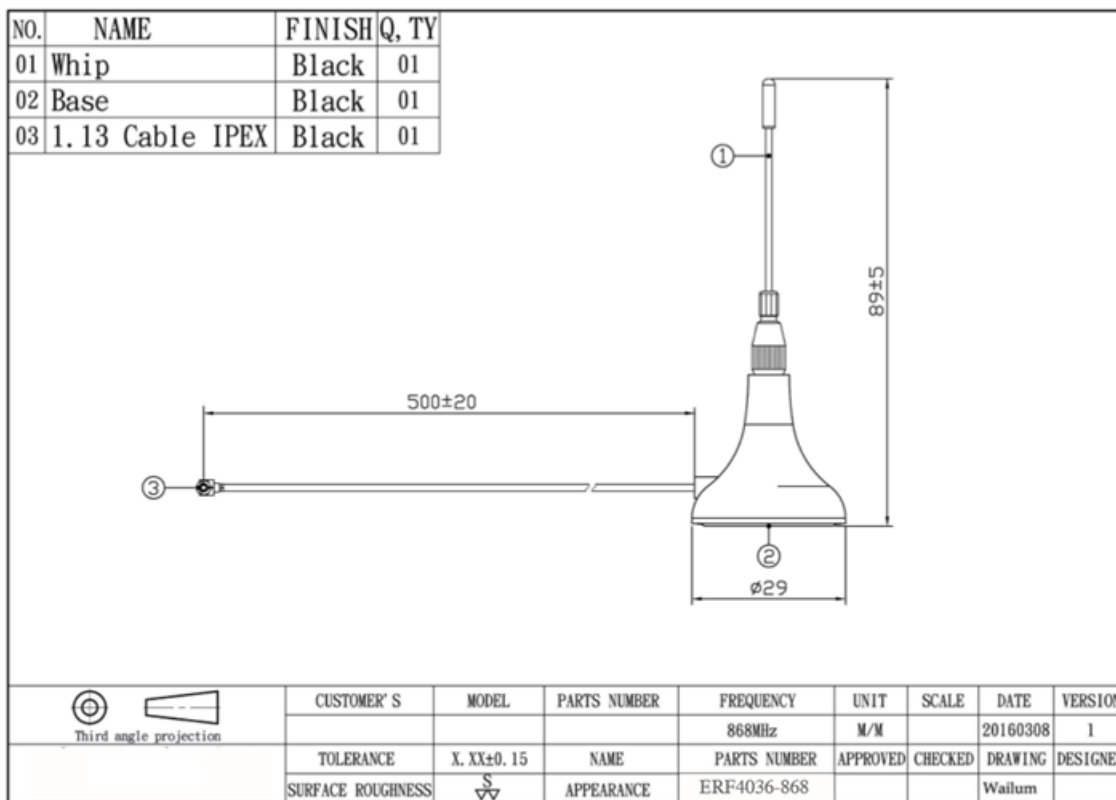
Impedance



Antenna, Whip

ERF4036

Dimensions



Connector

The ERF4036 antenna uses an U.FL connector.

Ordering information

Ordering can be done via www.summit-electronics.com or via info@summit-electronics.com. Please contact us for more information. Customisation of the product is available on request.

Technical support

For all product questions please contact us via info@summit-electronics.com

Document revision

Rev	Date	changes
2023v1	06-04-2023	First issue of document

Antenna, Whip

ERF4036

